

**MHONDORO SAFARI LODGE & VILLA** is a luxurious, 5-star safari lodge in the malaria-free, 'Big 5' Welgevonden Game Reserve in the Waterberg (Limpopo province, South Africa). Welgevonden encompasses 37 000 hectares and is an easy, 2h45-minute drive or a 50-minute flight from Johannesburg. Mhondoro features spectacular views and luxury accommodation, fine dining cuisine and passionate hospitality and service. Mhondoro is family-owned by Dutch nationals, Frank and Myriam Vogel, who both have a passion for African wildlife from which the desire was born to create a special place where nature may be preserved for future generations.

The ultimate 'big sky' destination, Mhondoro boasts unimpeded sunrises and sunsets over the Waterberg mountains and valleys. Guests can expect varied terrain, breath-taking landscapes and a diverse natural habitat featuring the 'Big 5', including a large white rhino population. Guided walking safaris with trained game rangers are offered by special arrangement, providing an excellent chance of spotting these precious, endangered beasts in their natural environment. Unique features at Mhondoro include a photographic game viewing hide at a waterhole, that is connected with the Main Lodge by a 65-metre long tunnel. The hide is accessible to all guests, at any time of day or night. Located at ground level, the hide provides excellent photographic opportunities from a distinctive perspective, as well as the excitement of getting really up close at eye level to elephants and other wildlife drinking from the waterhole.

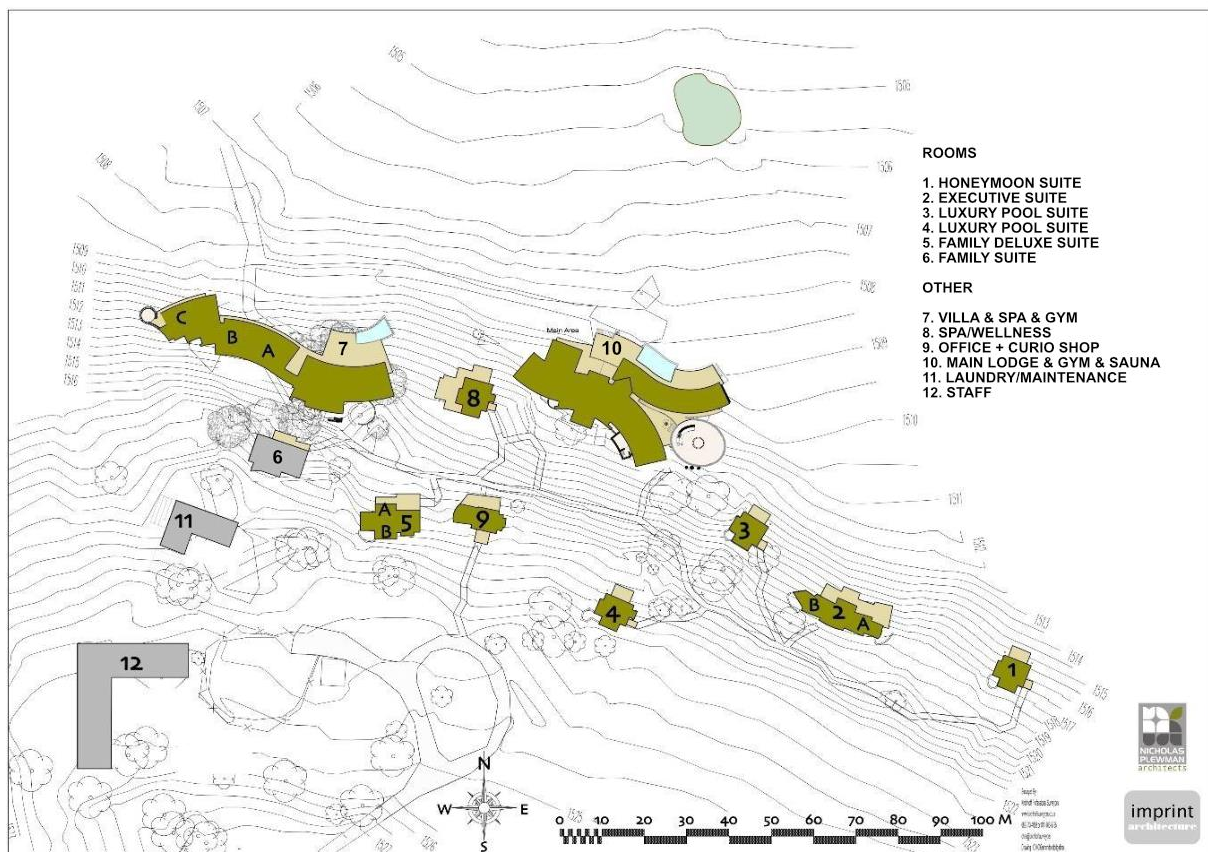
Other lodge facilities extend to heated swimming pools for all year-round swimming, as well as a fully equipped gym and infra-red sauna at the Main Lodge. The Mhondoro Villa has its own private gym and yoga room. The Mhondoro Spa is equipped with a private, outdoor spa deck and bath, and dual treatments are offered including facials, massage treatments, manicures and pedicures. Another unique feature at Mhondoro is a custom-built star deck with a telescope, to offer stargazing evenings on clear nights. For honeymooners or a romantic breakaway, the secluded Honeymoon suite comes with a private heated plunge pool and a day bed with views across the reserve and the waterhole.

Couple's spa treatments are offered, in addition to romantic private dinners set up on the deck overlooking the waterhole.

Mhondoro is the ideal destination for families, as the reserve is a 100% malaria free. It is family friendly and caters for children of all ages. Various age-specific activities are available for kids; including cookie baking, kids' walks, and learning about animal tracks and signs. Children under 12 receive a Kiddies' Activity Pack, including a Mhondoro bag with an activity booklet. Special 'Kids Bumble Drives' can be arranged (at a cost of R750 per drive) for parents and little ones under the age of 6, who are too young to join the regular game drives. Child-minding services can be arranged for parents who want to go on safari without their children; or just enjoy some quiet time, indulging in a spa treatment or a romantic dinner, while their children are being taken care of (cost is R400 per babysitter per game drive; or R175 per hour per babysitter outside of game drive times).

The Kids Play Area is located a short distance away from the suites in an enclosed area with electric fence to keep them safe from the animals. Here children between the ages of 2 and 10 years can keep themselves busy (or be supervised by a babysitter) playing on the jungle gym, swings, trampoline and in the sandpit. For older children or on rainy days, there is a (soundproof) playroom downstairs inside the Main Lodge, equipped with board games, puzzles, PlayStation, an air Hockey machine and many other toys to keep them entertained for hours.

## Accommodation:





**Main Lodge:** The Main Lodge sleeps a total of 18 guests; and consists of a modern, communal Main Lodge area (with fireplaces, bar, dining room, restaurant, wine cellar, gym, sauna, pool deck with heated swimming pool, and an underground tunnel to the hide) and 5 individually situated guest suites, spread out over an extensive area (see site map above), with the Honeymoon Suite (Room 1), being the furthest away from the main lodge, to ensure maximum privacy.

**1x Honeymoon Suite (sleeps 2):** King-size bed/twins, en-suite bathroom (with bath & shower), outside shower, hair dryer, gas fireplace, mini bar and coffee & tea station, air conditioning, room safe, heated plunge pool, outside deck area with relaxing day-bed, overlooking the waterhole.



**1x Executive Suite (sleeps 4):** Two separate bedrooms (king-size beds/twins) each with en-suite bathroom, (bath & shower), hair dryer, outside shower for each room, air conditioning in each bedroom, gas fireplaces in each bedroom, communal lounge area with additional wood fire place, room safe, mini bar and coffee & tea station, large outside deck with lounge chairs and a slightly heated plunge pool overlooking the waterhole





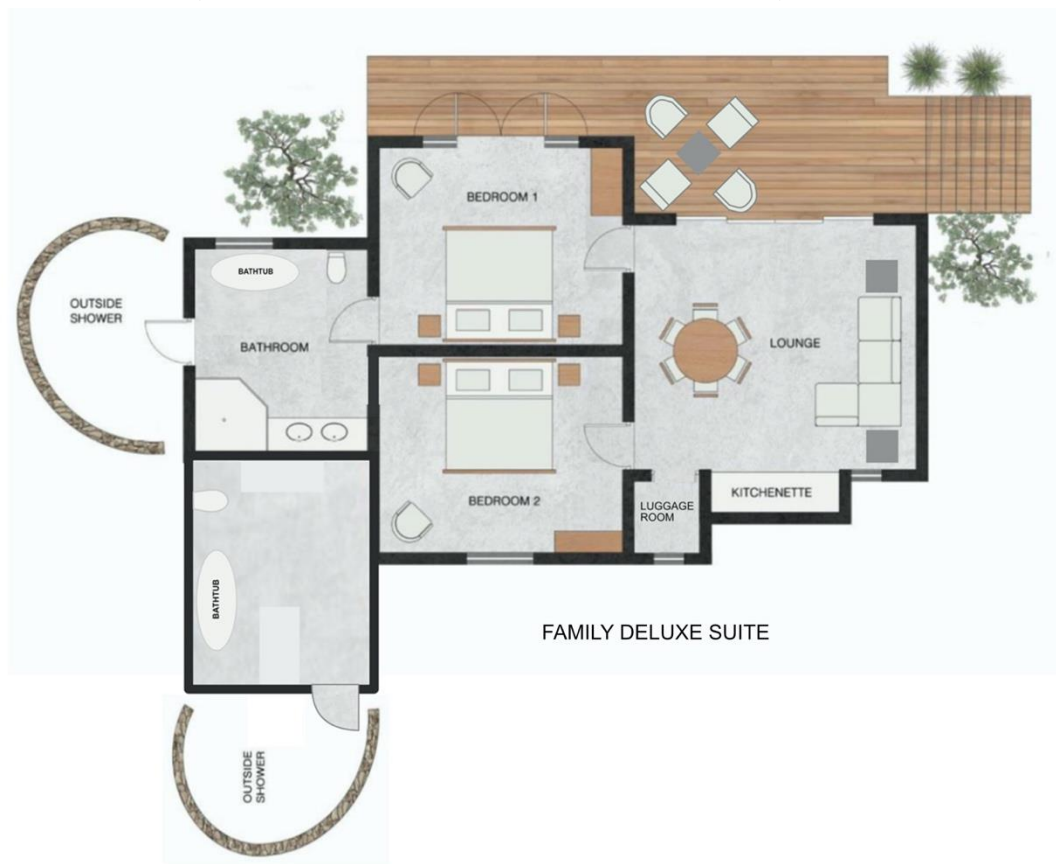
**Luxury Pool Suite Number 3 (sleeps 2):** King-size bed/twins, en-suite bathroom (with bath & shower), outside shower, hair dryer, fireplace, mini bar and coffee & tea station, air conditioning, room safe, outside deck with deck chairs, a slightly heated plunge pool, and a relaxing day-bed overlooking the waterhole.



**Luxury Pool Suite Number 4 (sleeps 2): Wheelchair accessible with wheelchair friendly bathroom.** King-size bed/twins, en-suite bathroom (with bath & shower), hair dryer, outside shower, gas fireplace, mini bar and coffee & tea station, air conditioning, room safe, outside deck with deck chairs, a slightly heated plunge pool and a raised wooden deck with relaxing day-bed, overlooking the waterhole.



**1x Family Deluxe Suite (sleeps 4):** Two bedrooms (king-size beds/twins) each with its own en-suite bathroom, hair dryer, one outside shower, air conditioning in each bedroom, living area with dining table, one gas fireplace, room safe, bar fridge with coffee & tea station and kitchenette area, outside deck with deck chairs (bush view, with limited view over the waterhole).





**1x Family Suite (sleeps 4):** Two separate bedrooms (king-size beds/twins) with one shared bathroom with separate entrance doors to the bathroom from both bedrooms with bath & shower), hair dryer, air conditioning in each bedroom, gas fireplace in communal lounge area with dining table, room safe, mini bar, coffee & tea station with kitchenette area , outside deck with deck chairs. No view of waterhole.

FAMILY SUITE





**1x Private Mhondoro Villa (sleeps 6):** The ultimate in luxury and privacy; the beautiful and very spacious Mhondoro Villa is perfect for families or groups of friends travelling together. The Mhondoro Villa accommodates 6 people, but can dine up to 10 people. The Mhondoro Villa is available for exclusive-use only; and comes with the luxury and flexibility of a private guide, private chef and dedicated butler.



**1x Master Bedroom:** Study, electric fireplace, TV, king-size bed, walk-in closet, en-suite bathroom with large bath tub, rain shower and separate toilet, air conditioning, room safe, outside shower with 'window' to view the waterhole, outside deck with relaxing day bed overlooking the waterhole.

**2x Deluxe Rooms:** King-size bed/twins, en-suite bathroom with separate toilet, room safe, air conditioning, outside deck with chairs overlooking the waterhole.

#### Features of the Mhondoro Villa:

- ❑ Inside dining area
- ❑ Living room area with wood fireplace and TV
- ❑ Fully equipped kitchen
- ❑ Bar area
- ❑ Guest toilet
- ❑ Outside dining area
- ❑ Outside lounge area with wood fireplace
- ❑ Large deck with lounge chairs and sun umbrellas overlooking the waterhole
- ❑ Heated swimming pool
- ❑ Yoga room
- ❑ Fully equipped Gym
- ❑ Two outside showers overlooking the waterhole

The Mhondoro Villa includes all meals, teas and coffees, soft drinks, local branded beers (except Craft Beers,) hand-select house wines and hand-select house spirits, as well as the use of a game viewing safari vehicle with personal ranger and the services of a personal chef, butler and housekeeping staff - giving guests the flexibility to arrange their own programme and choose times for game drives and meals to suit their needs. Children of all ages are welcome to join the game drives, when booked into the Mhondoro Villa. Although it is a complete lodge on its own; guests are welcome to make use of any/all the facilities at the Main Lodge, such as the Kids' Play Room, and the underground hide, which is only accessible from the main lodge; but only a minute's walk from the Mhondoro Villa.





## Activities and Features of Mhondoro

Reference	Mhondoro Safari Lodge & Villa
Suites	6 suites & a 3-bedroom Mhondoro Villa
Sizes of suites	Luxury Pool and Honeymoon Suites: 50 m2 Family Suite: 90 m2 Executive Suite: 100 m2 Mhondoro Villa: 541 m2
Guests	24
Children	Yes, child-friendly
Children's rate	0 - 23 months free of charge 2 - 11 years at 50% of the applicable adult rate 12 years and older pay full adult rate
Children on safari	Yes, 6 years and older; or any age when booked into the Mhondoro Villa
Children activities	Activity pack upon arrival, kiddies bush walks, 'bumble' drives, cookie baking, animal track and-sign lessons, outside play area with jungle gym and trampoline, inside playroom with board games, DVD's and PlayStation, child minding services
Babysitting	Yes, R175 per hour (outside of game drive times) or R400 per game drive period
Single supplement	Yes, cost per person sharing plus 50%
King bed convertible in singles	Yes, all rooms can be singles/twin beds, except the Mhondoro Villa Master Bedroom
Swimming pool	Yes, at the Main Lodge
Private plunge pool	Yes, all suites except the Family Deluxe and the Family Suite
Outside kids' area	Yes, jungle gym, trampoline, swings and sandpit surrounded by a safety fence.
Air-conditioning	Yes, in all the rooms
Fireplace	Yes, two in the Main Lodge, one in the Executive suite and one in the Mhondoro Villa, as well as a gas fireplace in each suite
Room ceiling fans	Yes, all rooms have fans
Kids' inside play area	Yes, indoor playroom at main lodge with PlayStation, DVD's and board games
Curio shop	Yes, all items are for own account
Safaris	Morning & Afternoon. Children should be 6 years and older to join safaris unless a private vehicle is paid for, and depending on availability
Guided walks/Walking safaris	Yes, on request only
Stargazing	Yes, star deck and telescope – weather depending

Mhondoro Safari Lodge & Safari Lodge, Welgevonden Game Reserve

PO Box 742, Vaalwater, South Africa

+27 (0) 87 150 2314 | [res@mhondoro.com](mailto:res@mhondoro.com)

Extra activities - Exclusive	Yes, target shooting, rhino tracking, kiddies bumble drives, cookie baking, (and spa treatments)
Extra activities - Inclusive	Yes, walking safaris (16 years and older), stargazing, kids track-and-sign lessons, kids mini bush walk
Spa	Yes, all treatments and retails products are for guests' own account
Gym	Two fully equipped gyms; one in main lodge and one in the Mhondoro Villa (to be used at any time, free of charge)
Boma	Traditional South African Dinner with entertainment
Meal options	Fine dining, tasting menus, food and wine pairing, kids menu
Internet connection	Free Wi-Fi all over the lodge and in all suites
TV	One in the main lodge and two in the Mhondoro Villa
Housekeeping services	Yes, housekeeping services guest rooms twice a day (normally while guests are on safari)
Drinking water	All water in the lodge and in all suites, are 100% drinkable (specialized on-site water filtration system)
Umbrellas	Yes, in all rooms as well as at the Main Lodge
Infra-red sauna	Yes, at the Main Lodge
Game viewing hide	Underground tunnel that leads to the hide
Celebrations	Birthday cakes, private dinners & romantic turn-downs. Small intimate weddings of up to 20 guests, can be arranged as well
Telephones	Yes, in all rooms but only for internal calls
Laundry services	Yes, complimentary
Bathrobes & Slippers	Yes, in all rooms
Back-up electricity	Yes, a generator
Room safes	Yes, all the suites have safes
Bath & Shower	All rooms have a bath and a separate shower, as well as an outside shower
Payment options	Cash (SA Rand, US Dollar, Euro or British Pound) or Credit/Debit cards (Mastercard & VISA)
Bird watching	On game drives and in the underground Waterhole Hide
Medical treatment	We have first aid trained employees in camp and first aid kits in the office and on all vehicles (for serious medical emergencies; Satib24 is available, and medical evacuations by air are



	also possible if guests have sufficient travel insurance)
Extra food services	Kosher food available in the Mhondoro Villa with prior notice and availability of chef
Beverage options	Local beers (except Craft beers), house wine, soft drinks, waters and selected liquor from each category is included. All premium beers, cellar wines and premium liquors are excluded and for own account
Mosquito nets	All the rooms have a mosquito net over the bed
Outdoor shower	All rooms have an outside shower except the Family Suite
Mini bar	Yes, all rooms have a mini bar and all drinks in the mini bar are inclusive
Hair dryer	One in each room
Suitable for disable guests	Luxury Pool suite number 4 is semi-wheelchair friendly.
Flights	Yes, Welgevonden has two airstrips
Conservation/Reserve Gate Levy	R 210 per person per day
Guest per safari vehicle	Maximum of 7 per vehicle; but also depends on total guests in camp.
Language of guides	English, Afrikaans (German, only selected guides)
Gratuity recommendation	R550 per day per room (R250 for ranger, R150 general staff and R150 waiters/chefs)

All activities and facilities shall be used at own risk. Mhondoro Safari Lodge & Villa accepts no responsibility for any lost, damage or missing belongings.

## **Road transfers**

Road transfers from O.R. Tambo International Airport to Welgevonden Main Gate is 2hrs 45minutes. Our reservations office can organize all road transfers for you. Prices start from R 5000 one way (based on a vehicle for 2 persons). Please note: prices are subject to change on confirmation of service. The transfer from the Welgevonden Main Gate to Mhondoro Safari Lodge & Villa (in an open vehicle) is about 50-60 min, and is included in your stay. A ranger will be there upon arrival; with drinks and snacks, and transfer you to from the Main Gate to Mhondoro Safari Lodge & Villa. All/any private vehicles will be safely parked at the Main Gate for the duration of your stay.

## **Air transfers**

Air transfers are available by private charter from O.R. Tambo International Airport to Welgevonden Game Reserve. It is a mere 45minute flight to Welgevonden Western Airstrip. Prices to charter a flight

start from R 26 000 one way (prices depend on the type of aircraft, as well as the number of passengers). Mhondoro Safari Lodge & Villa is a convenient 20-25 minute drive from the Western airstrip; where your ranger will be waiting for you with drinks and snacks, and bring you to Mhondoro Safari Lodge & Villa in an open vehicle (included in your stay). Our reservations office can organize all air charters for you. For any enquiries; call reservations on tel: +27 (0)87 150 2314.

## **Climate**

The climate of the Waterberg area can be described as warm temperate with three distinct seasons. From May to July it is dry with daily maximum and minimum temperatures of 22.3°C and 2.6°C respectively. Ground frosts occur regularly, particularly in low-lying areas. From August to October, daily temperatures begin to rise, with daily maximum and minimum temperatures of 27.6 °C and 8.6°C respectively, and although generally dry, thunderstorms may occur occasionally. The annual wet season extends from November to April, with daily maximum and minimum temperatures of 37°C and 14.5°C respectively.

## **Daily routine**

<b>Summer (September to April)</b>	<b>Programme</b>	<b>Winter (May – August)</b>
05h00	Wakeup call	06h00
05h30	Coffee/tea and morning safari	06h30
08h00/08h30 – 9h30am	Breakfast will be served (upon arrival back from safari)	09h00/09h30 - 10h00am
12h30-14h30pm	Lunch will be served at your leisure	12h30-14h30pm
16h15-16h30	Fruits & homemade ice coffee or ice tea	15h15-15h30
16h30pm	Afternoon safari	15h30/16h00pm
19h30-21h00	Drinks at the bar & Dinner will be served (upon arrival from safari)	19h00-20h30

Check in time is between 12:30 & 13:00 at the main gate and check out time is 11:00 am from the lodge, to be transported to the main gate by 12:00pm (your ranger will take you from the lodge back to the main gate in an open vehicle, included in your stay). Any arrival or departure outside of the scheduled pick-up and drop off times; must be pre-arranged, and are charged at a cost of R1000; due to logistics and for operational reasons.

## **To bring list**

- ☐ Sunscreen & Sunglasses
- ☐ Hat
- ☐ Camera
- ☐ Binoculars
- ☐ Comfortable clothing and walking shoes
- ☐ Neutral colour clothing and proper hiking shoes (if interested in doing walking safaris) ☐
- ☐ Bathing costume
- ☐ Warm jacket/fleece (even summer times can get cold due to possible rainy weather)
- ☐ Scarf, beanie and gloves (during winter months)

Mhondoro Safari Lodge & Safari Lodge, Welgevonden Game Reserve

PO Box 742, Vaalwater, South Africa

+27 (0) 87 150 2314 | [res@mhondoro.com](mailto:res@mhondoro.com)



- Work out clothing and trainers (if planning to use the gym)

## **Rates**

Please contact our Reservations for 2023/2024 Rates.

Contact number: Tel +27 (0)87 150 2314

Email address: [res@mhondoro.com](mailto:res@mhondoro.com)

Reservations working hours: Monday – Friday 08:00-17:00

Direct lodge contact number: +27 (0)14 755 4917

**All inclusive:** All meals, two game drive activities, guided walks, stargazing (weather permitted), soft drinks, local beers (except Craft Beers), house wines, a few house spirits, coffee & teas, laundry services, first aid kit (if needed).

**Exclusive:** Reserve Gate Levy, Premium beers, cellar wines, exclusive spirits, child minding services, curio shop, spa treatments, spa products (Rain & Elemis products for sale), gratuities (optional), extra activities (target shooting or rhino tracking), extra transfers and any meals after checking out time (11:00) on day of departure.

### **Directions from O.R. Tambo International Airport to Mhondoro Safari Lodge & Villa:**

From O.R. Tambo International Airport, take the R21 to Pretoria. Take exit onto 134 the N1 North towards Polokwane. When reaching the Kranskop Toll Plaza keep to the very left lane onto the R33 towards Modimolle. Drive straight through Vaalwater, where the R33 becomes the R517. The Main Gate of Welgevonden Game Reserve is at approximately 26km from Vaalwater on your left hand side, on the R517 towards Thabazimbi. The total distance from JHB is approximately 270km and should take about 2h45m to Welgevonden Main Gate (from the Main Gate; you will be collected by one of our guides; and it's about a 1-hour drive in an open game viewing vehicle to reach the lodge). Welgevonden Game Reserve has two Airstrips for those who prefer flying instead of driving. From O.R. Tambo International Airport to Welgevonden Game Reserve Western Airstrip will take a convenient 45-50 minutes. Guests will be welcomed with drinks and snacks on the airstrip by one of our rangers, and transported to the lodge with an open game viewing vehicle.



**Please feel free to follow us on:**

<https://www.facebook.com/mhondorosafarilodgeandvilla/>



@MhondoroLodge



mhondorosafarilodgeandvilla

**Fritz Breytenbach (CEO) & Ronel Breytenbach (Marketing Manager):** [marketing@mhondoro.com](mailto:marketing@mhondoro.com)  
**Jaces & Althi Bornman (General Managers):** [gm@mhondoro.com](mailto:gm@mhondoro.com)

